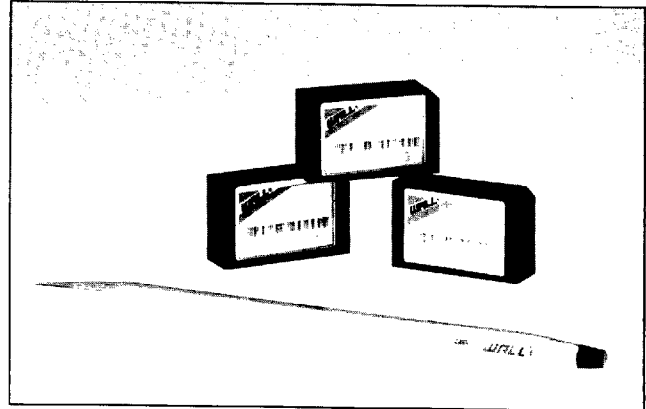


B AND RB SERIES

TO 3 WATTS

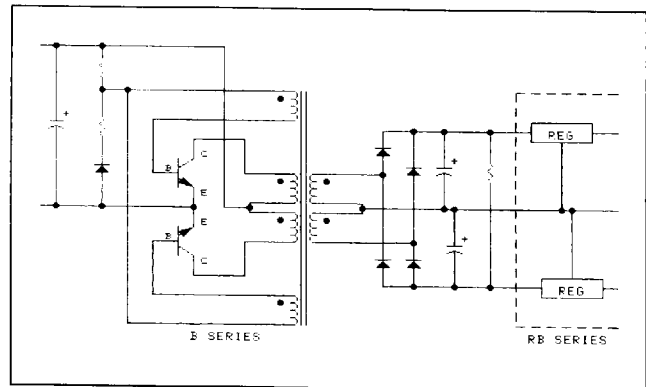
FEATURES

- Miniature Packaging
- 24-Pin Dip Compatibility
- High Efficiency
- High Reliability: MTBF > 1 Million hours
- Single and Dual Outputs
- Five Year Warranty



The B and RB Series from Wall Industries

Housed in a 0.8" x 1.25" x 0.4" case, the B Series and regulated version, the RB Series, offer the user an encapsulated DC/DC converter suitable for distributed power applications. Providing an economical solution to design challenges, these modules supply the power needed to confirm your programs' success. An MTBF in excess of 1 Million hours reflects the quality designed into these converters.



Simplified Schematic

SPECIFICATIONS

All specifications apply @ + 25°C ambient unless otherwise noted.

INPUT SPECIFICATIONS

Input Voltage Range 5, 12VDC ± 10%

OUTPUT SPECIFICATIONS

Output Current see table
 Voltage Tolerance ± 5%
 Line Regulation - B Series 1.2%/V in
 Line Regulation - RB Series ± 0.5%
 Load Regulation - B Series 10% (@ 20% to full load)
 Load Regulation - RB Series ± 0.5%
 Ripple/Noise - B Series (20MHz BW) ≤ 100mV (P-P)
 Ripple/Noise - RB Series (20MHz BW) ≤ 75mV (P-P)
 Short Circuit Protection Short Term

GENERAL SPECIFICATIONS

Efficiency (Typical) B Series: 80% RB Series: 50%
 Isolation Voltage, input to output 500 VDC
 Switching Frequency 50-KHz (typical)

ENVIRONMENTAL SPECIFICATIONS

Operating Temperature -25 to +85°C (case)
 Storage Temperature -55 to +100°C
 Humidity (non-condensing) 20% to 95% R.H.

PHYSICAL SPECIFICATIONS

Dimensions 0.8" x 1.25" x 0.4"
 Weight approx 0.35 oz.
 Case Material Non-metallic Case

Due to advances in technology, specifications subject to change without notice.

Wall Industries, Inc. • 5 Watson Brook Road • Exeter, NH 03833 • 603-778-2300 • FAX: 603-778-9797



■ 9564164 0000232 265 ■

