

# MAXIM

## Single/Dual/Triple/Quad Operational Amplifiers

ICL761X/2X/3X/4X

### General Description

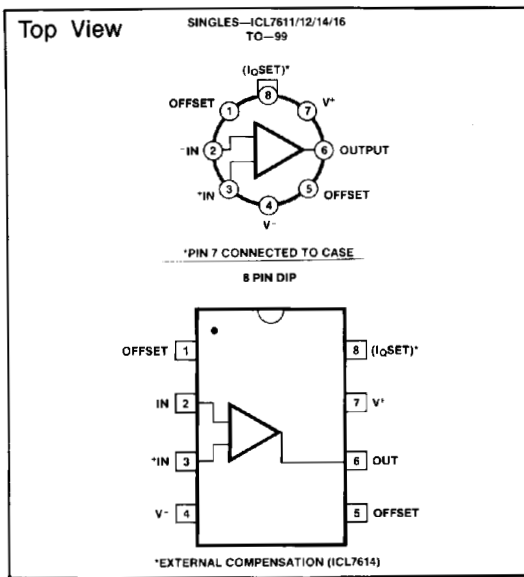
The ICL761X/762X/763X/764X family of monolithic CMOS op amps combine ultra low input current with low power operation over a wide supply voltage range. With pin selectable quiescent currents of 10, 100, or 1000  $\mu$ A per amplifier, these op amps will operate from  $\pm 1V$  to  $\pm 8V$  power supplies, or from single supplies from 2V to 16V. The CMOS outputs swing to within millivolts of the supply voltages.

The ultra low bias current of 1 pA makes this family of op amps ideal for long time constant integrators, picoammeters, low droop rate sample/hold amplifiers and other applications where input bias and offset currents are critical. A low noise current of 0.01 pA/  $\sqrt{\text{Hz}}$  and an input impedance of  $10^{12}$  ohms ensure optimum performance with very high source impedances in such applications as pH meters and photodiode amplifiers.

### Applications

- Battery Powered Instruments
- Low Leakage Amplifiers
- Long Time Constant Integrators
- Low Frequency Active Filters
- Hearing Aids and Microphone Amplifiers
- Low Droop Rate Sample/Hold Amplifiers
- Picoammeters

### Pin Configuration



### Features

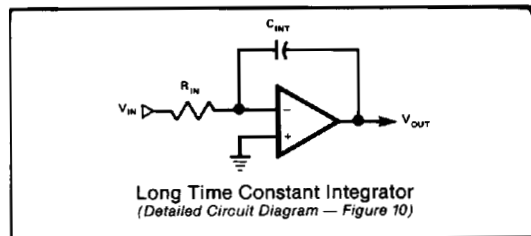
- Pin-for Pin 2nd Source!
- ◆ 1 pA Typical Bias Current—4 nA Maximum @ 125°C
- ◆ Wide Supply Voltage Range  $\pm 1V$  to  $\pm 8V$
- ◆ Industry Standard Pinouts
- ◆ Programmable Quiescent Currents of 10, 100 and 1000  $\mu$ A
- ◆ Monolithic, Low Power CMOS Design

### Ordering Information

| ICL76XX                         | M                  | N | QP                      |
|---------------------------------|--------------------|---|-------------------------|
| <b>V<sub>OS</sub> SELECTION</b> | <b>TEMP. RANGE</b> |   | <b>PACKAGE CODE</b>     |
| A=2mV                           | C=0°C to 70°C      |   | TV - 8 PIN TO-99        |
| B=5mV                           | M=-55°C to +125°C  |   | PA - 8 PIN PLASTIC DIP  |
| C=10mV                          |                    |   | SA - 8 PIN SMALL S.O.   |
| D=15mV                          |                    |   | JD - 14 PIN Cerdip      |
| E=20mV                          |                    |   | PD - 14 PIN PLASTIC DIP |
|                                 |                    |   | SD - 14 PIN SMALL S.O.  |
|                                 |                    |   | JE - 16 PIN Cerdip      |
|                                 |                    |   | PE - 16 PIN PLASTIC DIP |
|                                 |                    |   | SE - 16 PIN SMALL S.O.  |
|                                 |                    |   | WE - 16 PIN WIDE S.O.   |

|                             | Singles | Duals   | Triples | Quads   |
|-----------------------------|---------|---------|---------|---------|
|                             | ICL7611 | ICL7612 | ICL7614 | ICL7616 |
|                             | ICL7617 | ICL7618 | ICL7621 | ICL7622 |
|                             | ICL7631 | ICL7632 | ICL7641 | ICL7642 |
| Compensated                 | X       | X       | X       | X       |
| Externally Compensated      |         | X       |         |         |
| Extended CMVR               |         | X       |         |         |
| Offset null capability      | X       | X       | X       | X       |
| Programmable I <sub>Q</sub> | X       | X       | X       | X       |
| Fixed I <sub>Q</sub> {      |         |         |         |         |
| 10 $\mu$ A                  |         |         |         | X       |
| 100 $\mu$ A                 |         | X       | X       |         |
| 1 mA                        |         |         |         | X       |

### Typical Operating Circuit



# Single/Dual/Triple/Quad Operational Amplifiers

## Ordering Information

**ICL761X/2X/3X/4X**

| Single & Dual |                 |                     |             |                 |                     |
|---------------|-----------------|---------------------|-------------|-----------------|---------------------|
| PART          | TEMP. RANGE     | PACKAGE             | PART        | TEMP. RANGE     | PACKAGE             |
| ICL761XACPA   | 0°C to +70°C    | 8 Lead Plastic DIP  | ICL7621BCTV | 0°C to +70°C    | TO-99 Metal Can     |
| ICL761XACSA   | 0°C to +70°C    | 8 Lead Slim S.O.    | ICL7621BMTV | -55°C to +125°C | TO-99 Metal Can     |
| ICL761XACTV   | 0°C to +70°C    | TO-99 Metal Can     | ICL7621DCPA | 0°C to +70°C    | 8 Lead Plastic DIP  |
| ICL761XAMTV   | -55°C to +125°C | TO-99 Metal Can     | ICL7621DCSA | 0°C to +70°C    | 8 Lead Slim S.O.    |
| ICL761XBCPA   | 0°C to +70°C    | 8 Lead Plastic DIP  | ICL7621DCTV | 0°C to +70°C    | TO-99 Metal Can     |
| ICL761XBSCSA  | 0°C to +70°C    | 8 Lead Slim S.O.    | ICL7621DC/D | 0°C to +70°C    | Dice                |
| ICL761XBCTV   | 0°C to +70°C    | TO-99 Metal Can     | ICL7622ACPD | 0°C to +70°C    | 14 Lead Plastic DIP |
| ICL761XBMTV   | -55°C to +125°C | TO-99 Metal Can     | ICL7622ACSD | 0°C to +70°C    | 14 Lead Slim S.O.   |
| ICL761XDPA    | 0°C to +70°C    | 8 Lead Plastic DIP  | ICL7622ACJD | 0°C to +70°C    | 14 Lead CERDIP      |
| ICL761XDSCSA  | 0°C to +70°C    | 8 Lead Slim S.O.    | ICL7622AMJD | -55°C to +125°C | 14 Lead CERDIP      |
| ICL761XDCTV   | 0°C to +70°C    | TO-99 Metal Can     | ICL7622BCPD | 0°C to +70°C    | 14 Lead Plastic DIP |
| ICL761XD/D    | 0°C to +70°C    | Dice                | ICL7622BCSA | 0°C to +70°C    | 14 Lead Slim S.O.   |
| ICL7621ACPA   | 0°C to +70°C    | 8 Lead Plastic DIP  | ICL7622BCJD | 0°C to +70°C    | 14 Lead CERDIP      |
| ICL7621ACSA   | 0°C to +70°C    | 8 Lead Slim S.O.    | ICL7622BC/D | 0°C to +70°C    | Dice                |
| ICL7621ACTV   | 0°C to +70°C    | TO-99 Metal Can     |             |                 |                     |
| ICL7621AMTV   | -55°C to +125°C | TO-99 Metal Can     |             |                 |                     |
| ICL7621BCTV   | 0°C to +70°C    | TO-99 Metal Can     |             |                 |                     |
| ICL7621BMTV   | -55°C to +125°C | TO-99 Metal Can     |             |                 |                     |
| ICL7621DCPA   | 0°C to +70°C    | 8 Lead Plastic DIP  |             |                 |                     |
| ICL7621DCSA   | 0°C to +70°C    | 8 Lead Slim S.O.    |             |                 |                     |
| ICL7621DCTV   | 0°C to +70°C    | TO-99 Metal Can     |             |                 |                     |
| ICL7621DC/D   | 0°C to +70°C    | Dice                |             |                 |                     |
| ICL7622ACPD   | 0°C to +70°C    | 14 Lead Plastic DIP |             |                 |                     |
| ICL7622ACSD   | 0°C to +70°C    | 14 Lead Slim S.O.   |             |                 |                     |
| ICL7622ACJD   | 0°C to +70°C    | 14 Lead CERDIP      |             |                 |                     |
| ICL7622AMJD   | -55°C to +125°C | 14 Lead CERDIP      |             |                 |                     |
| ICL7622BCPD   | 0°C to +70°C    | 14 Lead Plastic DIP |             |                 |                     |
| ICL7622BCSA   | 0°C to +70°C    | 14 Lead Slim S.O.   |             |                 |                     |
| ICL7622BCJD   | 0°C to +70°C    | 14 Lead CERDIP      |             |                 |                     |
| ICL7622BC/D   | 0°C to +70°C    | Dice                |             |                 |                     |

# Single/Dual/Triple/Quad Operational Amplifiers

ICL761X/2X/3X/4X

## ABSOLUTE MAXIMUM RATINGS<sup>1</sup> — Single & Dual

Total Supply Voltage  $V^+$  to  $V^-$  ..... 18V  
 Input Voltage .....  $V^+ + 0.3$  to  $V^- - 0.3$ V  
 Differential Input Voltage<sup>2</sup> .....  $\pm[(V^+ + 0.3) - (V^- - 0.3)]$ V  
 Duration of Output Short Circuit<sup>3</sup> ..... Unlimited  
 Continuous Power Dissipation @ 25°C ..... Above 25°C

|                 | derate as follows: |        |
|-----------------|--------------------|--------|
| TO-99 Metal Can | 250mW              | 2mW/°C |
| 8 Lead Minidip  | 250mW              | 2mW/°C |
| 14 Lead Plastic | 375mW              | 3mW/°C |
| 14 Lead CERDIP  | 500mW              | 4mW/°C |
| 16 Lead Plastic | 375mW              | 3mW/°C |
| 16 Lead CERDIP  | 500mW              | 4mW/°C |

Storage Temperature Range ..... -55°C to +150°C

## Operating Temperature Range

M Series ..... -55°C to +125°C

C Series ..... 0°C to +70°C

Lead Temperature Soldering, 10 sec ..... 300°C

### Notes:

- Stresses above those listed under Absolute Maximum Ratings may cause permanent damage to the device. These are stress ratings only, and functional operation of the device at these or any other conditions above those indicated in the operational sections of the specifications is not implied. Exposure to absolute maximum rating conditions for extended periods may affect device reliability.
- Long term offset voltage stability will be degraded if large input differential voltages are applied for long periods of time.
- The outputs may be shorted to ground or to either supply for  $V_{SUPP} \leq 10$ V. Care must be taken to insure that the dissipation rating is not exceeded.

## ELECTRICAL CHARACTERISTICS — Single & Dual

( $V_{SUPP} = \pm 1.0$ V,  $I_Q = 10\mu$ A,  $T_A = 25^\circ$ C, unless noted)

| PARAMETER   | SYMBOL                   | CONDITIONS   | 76XXA |            |            | 76XXB |            |            | UNITS          |
|---|--------------------------|--|-------|------------|------------|-------|------------|------------|----------------|
|   |                          |  | MIN.  | TYP.       | MAX.       | MIN.  | TYP.       | MAX.       |                |
| Input Offset Voltage                                | $V_{OS}$                 | $R_S \leq 100k\Omega$ , $T_A = 25^\circ$ C<br>$T_{MIN} \leq T_A \leq T_{MAX}$                        |       | 2          | 3          |       | 5          | 7          | mV             |
| Temperature Coefficient of $V_{OS}$                 | $\Delta V_{OS}/\Delta T$ | $R_S \leq 100k\Omega$  |       | 10         |            |       | 15         |            | $\mu$ V/°C     |
| Input Offset Current                                | $I_{OS}$                 | $T_A = 25^\circ$ C<br>$0^\circ$ C $\leq T_A \leq +70^\circ$ C  |       | 0.5        | 30         |       | 0.5        | 30         | pA             |
| Input Bias Current                                  | $I_{BIAS}$               | $T_A = 25^\circ$ C<br>$0^\circ$ C $\leq T_A \leq +70^\circ$ C  |       | 1.0        | 50         |       | 1.0        | 50         | pA             |
| Common Mode Voltage Range (Except ICL7612, ICL7616) | $V_{CMR}$                |  | -0.4  |            | +0.6       | -0.4  |            | +0.6       | V              |
| Extended Common Mode Voltage Range (ICL7612 Only)   | $V_{CMR}$                |  | -1.1  |            | +0.6       | -1.1  |            | +0.6       | V              |
| Extended Common Mode Voltage Range (ICL7616 Only)   | $V_{CMR}$                | $I_Q = 10\mu$ A  | -1.3  |            | -0.3       | -1.3  |            | -0.3       | V              |
| Output Voltage Swing                                | $V_{OUT}$                | $R_L = 1M\Omega$ , $T_A = 25^\circ$ C<br>$0^\circ$ C $\leq T_A \leq +70^\circ$ C                     |       | $\pm 0.98$ | $\pm 0.96$ |       | $\pm 0.98$ | $\pm 0.96$ | V              |
| Large Signal Voltage Gain                           | $A_{VOL}$                | $V_O = \pm 0.1$ V, $R_L = 1M\Omega$<br>$T_A = 25^\circ$ C<br>$0^\circ$ C $\leq T_A \leq +70^\circ$ C |       | 90         | 80         |       | 90         | 80         | dB             |
| Unity Gain Bandwidth                                | $G_{BW}$                 |  |       | 0.044      |            |       | 0.044      |            | MHz            |
| Input Resistance                                    | $R_{IN}$                 |  |       | $10^{12}$  |            |       | $10^{12}$  |            | $\Omega$       |
| Common Mode Rejection Ratio                         | CMRR                     | $R_S \leq 100k\Omega$  |       | 80         |            |       | 80         |            | dB             |
| Power Supply Rejection Ratio                        | PSRR                     | $R_S \leq 100k\Omega$  |       | 80         |            |       | 80         |            | dB             |
| Input Referred Noise Voltage                        | $e_n$                    | $R_S = 100\Omega$ , $f = 1$ kHz  |       | 100        |            |       | 100        |            | $nV/\sqrt{Hz}$ |
| Input Referred Noise Current                        | $i_n$                    | $R_S = 100\Omega$ , $f = 1$ kHz  |       | 0.01       |            |       | 0.01       |            | $pA/\sqrt{Hz}$ |
| Supply Current (Per Amplifier)                      | $I_{SUPP}$               | No Signal, No Load   |       | 6          | 15         |       | 6          | 15         | $\mu$ A        |
| Slew Rate   | SR                       | $A_{VOL} = 1$ , $C_L = 100$ pF,<br>$V_{IN} = 0.2V_{p-p}$<br>$R_L = 1M\Omega$                         |       | 0.016      |            |       | 0.016      |            | V/ $\mu$ s     |
| Rise Time   | $t_r$                    | $V_{IN} = 50$ mV, $C_L = 100$ pF<br>$R_L = 1M\Omega$   |       | 20         |            |       | 20         |            | $\mu$ s        |
| Overshoot Factor                                    |                          | $V_{IN} = 50$ mV, $C_L = 100$ pF<br>$R_L = 1M\Omega$   |       | 5          |            |       | 5          |            | %              |

## Single/Dual/Triple/Quad Operational Amplifiers

**ELECTRICAL CHARACTERISTICS** – Single & Dual  
( $V_{SUPP} = \pm 5.0V$ ,  $T_A = 25^\circ C$ , unless noted)

| PARAMETER   | SYMBOL                   | CONDITIONS   | 76XXA     |           | 76XXB     |           | 76XXD     |           | UNITS            |
|---|--------------------------|--|-----------|-----------|-----------|-----------|-----------|-----------|------------------|
|   |                          |  | MIN.      | TYP. MAX. | MIN.      | TYP. MAX. | MIN.      | TYP. MAX. |                  |
| Input Offset Voltage                                | $V_{OS}$                 | $R_S \leq 100k\Omega$ , $T_A = 25^\circ C$<br>$T_{MIN} \leq T_A \leq T_{MAX}$  | 2         |           | 5         |           | 15        |           | mV               |
|   |                          |  | 3         |           | 7         |           | 20        |           |                  |
| Temperature Coefficient of $V_{OS}$                 | $\Delta V_{OS}/\Delta T$ | $R_S \leq 100k\Omega$  | 10        |           | 15        |           | 25        |           | $\mu V/^\circ C$ |
| Input Offset Current                                | $I_{OS}$                 | $T_A = 25^\circ C$<br>$0^\circ C \leq T_A \leq +70^\circ C$<br>$-55^\circ C \leq T_A \leq +125^\circ C$  | 0.5 30    |           | 0.5 30    |           | 0.5 30    |           | pA               |
|   |                          |  | 300       |           | 300       |           | 300       |           |                  |
|   |                          |  | 800       |           | 800       |           | 800       |           |                  |
| Input Bias Current                                  | $I_{BIAS}$               | $T_A = 25^\circ C$<br>$0^\circ C \leq T_A \leq +70^\circ C$<br>$-55^\circ C \leq T_A \leq +125^\circ C$  | 1.0 50    |           | 1.0 50    |           | 1.0 50    |           | pA               |
|   |                          |  | 400       |           | 400       |           | 400       |           |                  |
|   |                          |  | 4000      |           | 4000      |           | 4000      |           |                  |
| Common Mode Voltage Range (Except ICL7612, ICL7616) | $V_{CMR}$                | $I_Q = 10\mu A^1$  | +4.4      |           | +4.4      |           | +4.4      |           | V                |
|   |                          |  | -4.0      |           | -4.0      |           | -4.0      |           |                  |
|   |                          |  | +4.2      |           | +4.2      |           | +4.2      |           |                  |
| Extended Common Mode Voltage Range (ICL7612 Only)   | $V_{CMR}$                | $I_Q = 10\mu A$  | +5.3      |           | +5.3      |           | +5.3      |           | V                |
|   |                          |  | -5.1      |           | -5.1      |           | -5.1      |           |                  |
|   |                          |  | +5.3      |           | +5.3      |           | +5.3      |           |                  |
| Extended Common Mode Voltage Range (ICL7618 Only)   | $V_{CMR}$                | $I_Q = 10\mu A$  | -5.3      |           | -5.3      |           | -5.3      |           | V                |
|   |                          |  | +3.7      |           | +3.7      |           | +3.5      |           |                  |
|   |                          |  | -5.1      |           | -5.1      |           | -5.1      |           |                  |
| Output Voltage Swing                                | $V_{OUT}$                | (1) $I_Q = 10\mu A$ , $R_L = 1M\Omega$<br>$T_A = 25^\circ C$<br>$0^\circ C \leq T_A \leq +70^\circ C$<br>$-55^\circ C \leq T_A \leq +125^\circ C$                | $\pm 4.9$ |           | $\pm 4.9$ |           | $\pm 4.9$ |           | V                |
|   |                          |  | $\pm 4.8$ |           | $\pm 4.8$ |           | $\pm 4.8$ |           |                  |
|   |                          |  | $\pm 4.7$ |           | $\pm 4.7$ |           | $\pm 4.7$ |           |                  |
| Large Signal Voltage Gain                           | $A_{VOL}$                | $V_O = \pm 4.0V$ , $R_L = 1M\Omega$<br>$I_Q = 10\mu A$ , $T_A = 25^\circ C$<br>$0^\circ C \leq T_A \leq +70^\circ C$<br>$-55^\circ C \leq T_A \leq +125^\circ C$ | 86 104    |           | 80 104    |           | 80 104    |           | dB               |
|   |                          |  | 80        |           | 75        |           | 75        |           |                  |
|   |                          |  | 74        |           | 68        |           | 68        |           |                  |
| Unity Gain Bandwidth                                | $G_{BW}$                 | $I_Q = 10\mu A^1$<br>$I_Q = 100\mu A$<br>$I_Q = 1mA^1$   | 0.044     |           | 0.044     |           | 0.044     |           | MHz              |
|   |                          |  | 0.48      |           | 0.48      |           | 0.48      |           |                  |
|   |                          |  | 1.4       |           | 1.4       |           | 1.4       |           |                  |

Note 1: ICL7611, 7612, 7616 only  
Note 2: ICL7614; 39 pF from pin 6 to pin 8.

# Single/Dual/Triple/Quad Operational Amplifiers

ICL761X/2X/3X/4X

**ELECTRICAL CHARACTERISTICS – Single & Dual (Continued)**  
( $V_{SUPP} = \pm 5.0V$ ,  $T_A = 25^\circ C$ , unless noted)

| PARAMETER                      | SYMBOL          | CONDITIONS   | 76XXA     |      |      | 76XXB     |      |      | 76XXD     |      |      | UNITS           |
|--------------------------------|-----------------|--|-----------|------|------|-----------|------|------|-----------|------|------|-----------------|
|                                |                 |  | MIN.      | TYP. | MAX. | MIN.      | TYP. | MAX. | MIN.      | TYP. | MAX. |                 |
| Input Resistance               | $R_{IN}$        |  | $10^{12}$ |      |      | $10^{12}$ |      |      | $10^{12}$ |      |      | $\Omega$        |
| Common Mode Rejection Ratio    | CMRR            | $R_S \leq 100k\Omega$ , $I_Q = 10\mu A^1$  | 76        | 96   |      | 70        | 96   |      | 70        | 96   |      | dB              |
|                                |                 | $R_S \leq 100k\Omega$ , $I_Q = 100\mu A$   | 76        | 91   |      | 70        | 91   |      | 70        | 91   |      |                 |
|                                |                 | $R_S \leq 100k\Omega$ , $I_Q = 1mA^1$  | 66        | 87   |      | 60        | 87   |      | 60        | 87   |      |                 |
| Power Supply Rejection Ratio   | PSRR            | $R_S \leq 100k\Omega$ , $I_Q = 10\mu A^1$  | 80        | 94   |      | 80        | 94   |      | 80        | 94   |      | dB              |
|                                |                 | $R_S \leq 100k\Omega$ , $I_Q = 100\mu A$   | 80        | 86   |      | 80        | 86   |      | 80        | 86   |      |                 |
|                                |                 | $R_S \leq 100k\Omega$ , $I_Q = 1mA^1$  | 70        | 77   |      | 70        | 77   |      | 70        | 77   |      |                 |
| Input Referred Noise Voltage   | $e_n$           | $R_S = 100\Omega$ , $f = 1kHz$   | 100       |      |      | 100       |      |      | 100       |      |      | nV/ $\sqrt{Hz}$ |
| Input Referred Noise Current   | $i_n$           | $R_S = 100\Omega$ , $f = 1kHz$   | 0.01      |      |      | 0.01      |      |      | 0.01      |      |      | pA/ $\sqrt{Hz}$ |
| Supply Current (Per Amplifier) | $I_{SUPP}$      | No Signal, No Load<br>$I_Q = 10\mu A^1$<br>$I_Q = 100\mu A$<br>$I_Q = 1mA^1$   | 0.01      | 0.02 |      | 0.01      | 0.02 |      | 0.01      | 0.02 |      | mA              |
|                                |                 |  | 0.1       | 0.25 |      | 0.1       | 0.25 |      | 0.1       | 0.25 |      |                 |
|                                |                 |  | 1.0       | 2.5  |      | 1.0       | 2.5  |      | 1.0       | 2.5  |      |                 |
|                                |                 |  |           |      |      |           |      |      |           |      |      |                 |
| Channel Separation             | $V_{O1}/V_{O2}$ | $A_{VOL} = 100$  | 120       |      |      | 120       |      |      | 120       |      |      | dB              |
| Slew Rate <sup>2</sup>         | SR              | $A_{VOL} = 1$ , $C_L = 100pF$<br>$V_{IN} = 8V_{p-p}$<br>$I_Q = 10\mu A^1$ , $R_L = 1M\Omega$<br>$I_Q = 100\mu A$ , $R_L = 100k\Omega$<br>$I_Q = 1mA^1$ , $R_L = 10k\Omega$ | 0.016     |      |      | 0.016     |      |      | 0.016     |      |      | V/ $\mu s$      |
|                                |                 |  | 0.16      |      |      | 0.16      |      |      | 0.16      |      |      |                 |
|                                |                 |  | 1.6       |      |      | 1.6       |      |      | 1.6       |      |      |                 |
|                                |                 |  |           |      |      |           |      |      |           |      |      |                 |
| Rise Time <sup>2</sup>         | $t_r$           | $V_{IN} = 50mV$ , $C_L = 100pF$<br>$I_Q = 10\mu A^1$ , $R_L = 1M\Omega$<br>$I_Q = 100\mu A$ , $R_L = 100k\Omega$<br>$I_Q = 1mA^1$ , $R_L = 10k\Omega$                      | 20        |      |      | 20        |      |      | 20        |      |      | $\mu s$         |
|                                |                 |  | 2         |      |      | 2         |      |      | 2         |      |      |                 |
|                                |                 |  | 0.9       |      |      | 0.9       |      |      | 0.9       |      |      |                 |
|                                |                 |  |           |      |      |           |      |      |           |      |      |                 |
| Overshoot Factor <sup>2</sup>  |                 | $V_{IN} = 50mV$ , $C_L = 100pF$<br>$I_Q = 10\mu A^1$ , $R_L = 1M\Omega$<br>$I_Q = 100\mu A$ , $R_L = 100k\Omega$<br>$I_Q = 1mA^1$ , $R_L = 10k\Omega$                      | 5         |      |      | 5         |      |      | 5         |      |      | %               |
|                                |                 |  | 10        |      |      | 10        |      |      | 10        |      |      |                 |
|                                |                 |  | 40        |      |      | 40        |      |      | 40        |      |      |                 |
|                                |                 |  |           |      |      |           |      |      |           |      |      |                 |

Note 1: ICL7611, 7612, 7616 only.  
Note 2: ICL7614; 39 pF from pin 6 to pin 8.

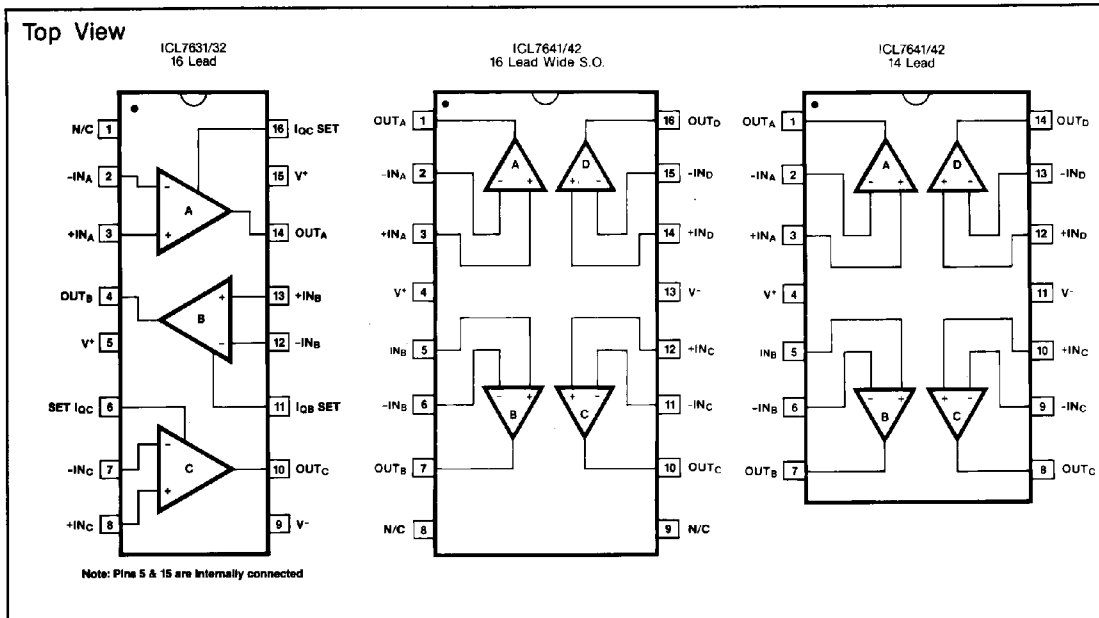
# Single/Dual/Triple/Quad Operational Amplifiers

## Ordering Information

| Triple & Quad |                 |                     |             |                 |                     |
|---------------|-----------------|---------------------|-------------|-----------------|---------------------|
| PART          | TEMP. RANGE     | PACKAGE             | PART        | TEMP. RANGE     | PACKAGE             |
| ICL763XBCPE   | 0°C to +70°C    | 16 Lead Plastic DIP | ICL764XBCPD | 0°C to +70°C    | 14 Lead Plastic DIP |
| ICL763XBCSE   | 0°C to +70°C    | 16 Lead Slim S.O.   | ICL764XBCWE | 0°C to +70°C    | 16 Lead Wide S.O.   |
| ICL763XCCPE   | 0°C to +70°C    | 16 Lead Plastic DIP | ICL764XCCPD | 0°C to +70°C    | 14 Lead Plastic DIP |
| ICL763XCCSE   | 0°C to +70°C    | 16 Lead Slim S.O.   | ICL764XCCWE | 0°C to +70°C    | 16 Lead Wide S.O.   |
| ICL763XECPE   | 0°C to +70°C    | 16 Lead Plastic DIP | ICL764XECPD | 0°C to +70°C    | 14 Lead Plastic DIP |
| ICL763XECSE   | 0°C to +70°C    | 16 Lead Slim S.O.   | ICL764XECWE | 0°C to +70°C    | 16 Lead Wide S.O.   |
| ICL763XBCJE   | 0°C to +70°C    | 16 Lead CERDIP      | ICL764XBCJD | 0°C to +70°C    | 14 Lead CERDIP      |
| ICL763XCCJE   | 0°C to +70°C    | 16 Lead CERDIP      | ICL764XCCJD | 0°C to +70°C    | 14 Lead CERDIP      |
| ICL763XECJE   | 0°C to +70°C    | 16 Lead CERDIP      | ICL764XECJD | 0°C to +70°C    | 14 Lead CERDIP      |
| ICL763XBMJE   | -55°C to +125°C | 16 Lead CERDIP      | ICL764XBMJD | -55°C to +125°C | 14 Lead CERDIP      |
| ICL763XCMJE   | -55°C to +125°C | 16 Lead CERDIP      | ICL764XCMJD | -55°C to +125°C | 14 Lead CERDIP      |
| ICL763XEC/D   | 0°C to +70°C    | Dice                | ICL764XEC/D | 0°C to +70°C    | Dice                |

(X above is replaced by: 1, 2)

## Pin Configuration



# Single/Dual/Triple/Quad Operational Amplifiers

ICL761X/2X/3X/4X

## ABSOLUTE MAXIMUM RATINGS<sup>1</sup> – Triple & Quad

|   |                                 |
|---|---------------------------------|
| Total Supply Voltage $V^+$ to $V^-$ .....           | 18V                             |
| Input Voltage .....                                 | $V^+ + 0.3$ to $V^- - 0.3V$     |
| Differential Input Voltage <sup>2</sup> .....       | $\pm(V^+ + 0.3) - (V^- - 0.3)V$ |
| Duration of Output Short Circuit <sup>3</sup> ..... | Unlimited                       |
| Continuous Power Dissipation @ 25°C                 | Above 25°C                      |
|   | derate as follows:              |
| TO-99 Metal Can                                     | 250mW 2mW/°C                    |
| 8 Lead Minidip                                      | 250mW 2mW/°C                    |
| 14 Lead Plastic                                     | 375mW 3mW/°C                    |
| 14 Lead CERDIP                                      | 500mW 4mW/°C                    |
| 16 Lead Plastic                                     | 375mW 3mW/°C                    |
| 16 Lead CERDIP                                      | 500mW 4mW/°C                    |
| Storage Temperature Range .....                     | -55°C to +150°C                 |

## Operating Temperature Range

|  |                 |
|--|-----------------|
| M Series .....                           | -55°C to +125°C |
| C Series .....                           | 0°C to +70°C    |
| Lead Temperature Soldering, 10 sec ..... | 300°C           |

### Notes:

- Stresses above those listed under Absolute Maximum Ratings may cause permanent damage to the device. These are stress ratings only, and functional operation of the device at these or any other conditions above those indicated in the operational sections of the specifications is not implied. Exposure to absolute maximum rating conditions for extended periods may affect device reliability.
- Long term offset voltage stability will be degraded if large input differential voltages are applied for long periods of time.
- The outputs may be shorted to ground or to either supply for  $V_{SUPP} \leq 10V$ . Care must be taken to insure that the dissipation rating is not exceeded.

## ELECTRICAL CHARACTERISTICS – Triple & Quad

( $V_{SUPP} = \pm 1.0V$ ,  $I_Q = 10\mu A$ ,  $T_A = 25^\circ C$ , unless noted)  
Specs apply to ICL7631/7632/7642 only.

| PARAMETER                           | SYMBOL                   | CONDITIONS   | 76XXB |                          |        | 76XXC |                          |          | UNITS            |
|-------------------------------------|--------------------------|--|-------|--------------------------|--------|-------|--------------------------|----------|------------------|
|                                     |                          |  | MIN.  | TYP.                     | MAX.   | MIN.  | TYP.                     | MAX.     |                  |
| Input Offset Voltage                | $V_{OS}$                 | $R_S \leq 100k\Omega$ , $T_A = 25^\circ C$<br>$T_{MIN} \leq T_A \leq T_{MAX}$                      |       |                          | 5<br>7 |       |                          | 10<br>12 | mV               |
| Temperature Coefficient of $V_{OS}$ | $\Delta V_{OS}/\Delta T$ | $R_S \leq 100k\Omega$  |       | 15                       |        |       | 20                       |          | $\mu V/^\circ C$ |
| Input Offset Current                | $I_{OS}$                 | $T_A = 25^\circ C$<br>$0^\circ C \leq T_A \leq +70^\circ C$  |       | 0.5                      | 30     |       | 0.5                      | 30       | $\mu A$          |
| Input Bias Current                  | $I_{BIAS}$               | $T_A = 25^\circ C$<br>$0^\circ C \leq T_A \leq +70^\circ C$  |       | 1.0                      | 50     |       | 1.0                      | 50       | $\mu A$          |
| Common Mode Voltage Range           | $V_{CMR}$                |  | -0.4  |                          | +0.6   | -0.4  |                          | +0.6     | V                |
| Output Voltage Swing                | $V_{OUT}$                | $R_L = 1M\Omega$ , $T_A = 25^\circ C$<br>$0^\circ C \leq T_A \leq +70^\circ C$                     |       | $\pm 0.98$<br>$\pm 0.96$ |        |       | $\pm 0.98$<br>$\pm 0.96$ |          | V                |
| Large Signal Voltage Gain           | $A_{VOL}$                | $V_O = \pm 0.1V$ , $R_L = 1M\Omega$<br>$T_A = 25^\circ C$<br>$0^\circ C \leq T_A \leq +70^\circ C$ |       | 90<br>80                 |        |       | 90<br>80                 |          | dB               |
| Unity Gain Bandwidth                | $G_{BW}$                 |  |       | 0.044                    |        |       | 0.044                    |          | MHz              |
| Input Resistance                    | $R_{IN}$                 |  |       | $10^{12}$                |        |       | $10^{12}$                |          | $\Omega$         |
| Common Mode Rejection Ratio         | CMRR                     | $R_S \leq 100k\Omega$  |       | 80                       |        |       | 80                       |          | dB               |
| Power Supply Rejection Ratio        | PSRR                     |  |       | 80                       |        |       | 80                       |          | dB               |
| Input Referred Noise Voltage        | $e_n$                    | $R_S = 100\Omega$ , $f = 1kHz$   |       | 100                      |        |       | 100                      |          | $nV/\sqrt{Hz}$   |
| Input Referred Noise Current        | $i_n$                    | $R_S = 100\Omega$ , $f = 1kHz$   |       | 0.01                     |        |       | 0.01                     |          | $pA/\sqrt{Hz}$   |
| Supply Current (Per Amplifier)      | $I_{SUPP}$               | No Signal, No Load   |       | 6                        | 15     |       | 6                        | 15       | $\mu A$          |
| Channel Separation                  | $V_{O1}/V_{O2}$          | $A_{VOL} = 100$  |       | 120                      |        |       | 120                      |          | dB               |
| Slew Rate                           | SR                       | $A_{VOL} = 1$ , $C_L = 100pF$ ,<br>$V_{IN} = 0.2V_{p-p}$ ,<br>$R_L = 1M\Omega$                     |       | 0.016                    |        |       | 0.016                    |          | $V/\mu s$        |
| Rise Time                           | $t_r$                    | $V_{IN} = 50mV$ , $C_L = 100pF$ ,<br>$R_L = 1M\Omega$  |       | 20                       |        |       | 20                       |          | $\mu s$          |
| Overshoot Factor                    |                          | $V_{IN} = 50mV$ , $C_L = 100pF$ ,<br>$R_L = 1M\Omega$  |       | 5                        |        |       | 5                        |          | %                |

## Single/Dual/Triple/Quad Operational Amplifiers

**ELECTRICAL CHARACTERISTICS – Triple & Quad**  
 ( $V_{SUPP} = \pm 5.0V$ ,  $T_A = 25^\circ C$ , unless noted)

| PARAMETER                           | SYMBOL                   | CONDITIONS  | 76XXB |           |      | 76XXC |           |      | 76XXE |           |      | UNITS            |
|-------------------------------------|--------------------------|---|-------|-----------|------|-------|-----------|------|-------|-----------|------|------------------|
|                                     |                          |   | MIN.  | TYP.      | MAX. | MIN.  | TYP.      | MAX. | MIN.  | TYP.      | MAX. |                  |
| Input Offset Voltage                | $V_{OS}$                 | $R_S \leq 100k\Omega$ , $T_A = 25^\circ C$<br>$T_{MIN} \leq T_A \leq T_{MAX}$   |       | 5         |      |       | 10        |      |       | 20        |      | mV               |
| Temperature Coefficient of $V_{OS}$ | $\Delta V_{OS}/\Delta T$ | $R_S \leq 100k\Omega$   |       | 15        |      |       | 20        |      |       | 30        |      | $\mu V/^\circ C$ |
| Input Offset Current                | $I_{OS}$                 | $T_A = 25^\circ C$<br>$0^\circ C \leq T_A \leq +70^\circ C$<br>$-55^\circ C \leq T_A \leq +125^\circ C$   |       | 0.5       | 30   |       | 0.5       | 30   |       | 0.5       | 30   | pA               |
| Input Bias Current                  | $I_{BIAS}$               | $T_A = 25^\circ C$<br>$0^\circ C \leq T_A \leq +70^\circ C$<br>$-55^\circ C \leq T_A \leq +125^\circ C$   |       | 1.0       | 50   |       | 1.0       | 50   |       | 1.0       | 50   | pA               |
| Common Mode Voltage Range           | $V_{CMR}$                | $I_Q = 10\mu A^1$   |       | +4.4      | -4.0 |       | +4.4      | -4.0 |       | +4.4      | -4.0 | V                |
|                                     |                          | $I_Q = 100\mu A^3$  |       | +4.2      | -4.0 |       | +4.2      | -4.0 |       | +4.2      | -4.0 |                  |
|                                     |                          | $I_Q = 1mA^2$   |       | +3.7      | -3.7 |       | +3.7      | -3.7 |       | +3.7      | -3.7 |                  |
| Output Voltage Swing                | $V_{OUT}$                | (1) $I_Q = 10\mu A$ , $R_L = 1M\Omega$<br>$T_A = 25^\circ C$<br>$0^\circ C \leq T_A \leq +70^\circ C$<br>$-55^\circ C \leq T_A \leq +125^\circ C$                       |       | $\pm 4.9$ |      |       | $\pm 4.9$ |      |       | $\pm 4.9$ |      | V                |
|                                     |                          | (3) $I_Q = 100\mu A$ , $R_L = 100k\Omega$<br>$T_A = 25^\circ C$<br>$0^\circ C \leq T_A \leq +70^\circ C$<br>$-55^\circ C \leq T_A \leq +125^\circ C$                    |       | $\pm 4.8$ |      |       | $\pm 4.8$ |      |       | $\pm 4.8$ |      |                  |
|                                     |                          | (2) $I_Q = 1mA$ , $R_L = 10k\Omega$<br>$T_A = 25^\circ C$<br>$0^\circ C \leq T_A \leq +70^\circ C$<br>$-55^\circ C \leq T_A \leq +125^\circ C$                          |       | $\pm 4.5$ |      |       | $\pm 4.5$ |      |       | $\pm 4.5$ |      |                  |
|                                     |                          |   |       | $\pm 4.7$ |      |       | $\pm 4.7$ |      |       | $\pm 4.7$ |      |                  |
|                                     |                          |   |       | $\pm 4.8$ |      |       | $\pm 4.8$ |      |       | $\pm 4.8$ |      |                  |
|                                     |                          |   |       | $\pm 4.5$ |      |       | $\pm 4.5$ |      |       | $\pm 4.5$ |      |                  |
| Large Signal Voltage Gain           | $A_{VOL}$                | $V_O = \pm 4.0V$ , $R_L = 1M\Omega^1$<br>$I_Q = 10\mu A^1$ , $T_A = 25^\circ C$<br>$0^\circ C \leq T_A \leq +70^\circ C$<br>$-55^\circ C \leq T_A \leq +125^\circ C$    |       | 86        | 104  |       | 80        | 104  |       | 80        | 104  | dB               |
|                                     |                          | $V_O = \pm 4.0V$ , $R_L = 100k\Omega^1$<br>$I_Q = 100\mu A^1$ , $T_A = 25^\circ C$<br>$0^\circ C \leq T_A \leq +70^\circ C$<br>$-55^\circ C \leq T_A \leq +125^\circ C$ |       | 86        | 102  |       | 80        | 102  |       | 80        | 102  |                  |
|                                     |                          | $V_O = \pm 4.0V$ , $R_L = 10k\Omega^2$<br>$I_Q = 1mA^1$ , $T_A = 25^\circ C$<br>$0^\circ C \leq T_A \leq +70^\circ C$<br>$-55^\circ C \leq T_A \leq +125^\circ C$       |       | 86        | 98   |       | 80        | 98   |       | 80        | 98   |                  |
|                                     |                          |   |       | 80        |      |       | 75        |      |       | 75        |      |                  |
|                                     |                          |   |       | 74        |      |       | 68        |      |       | 68        |      |                  |
|                                     |                          |   |       | 74        |      |       | 68        |      |       | 68        |      |                  |
| Unity Gain Bandwidth                | $G_{BW}$                 | $I_Q = 10\mu A^1$<br>$I_Q = 100\mu A^3$<br>$I_Q = 1mA^2$  |       | 0.044     |      |       | 0.044     |      |       | 0.044     |      | MHz              |
| Input Resistance                    | $R_{IN}$                 |   |       | $10^{12}$ |      |       | $10^{12}$ |      |       | $10^{12}$ |      | $\Omega$         |
| Common Mode Rejection Ratio         | CMRR                     | $R_S \leq 100k\Omega$ , $I_Q = 10\mu A^1$   |       | 76        | 96   |       | 70        | 96   |       | 70        | 96   | dB               |
|                                     |                          | $R_S \leq 100k\Omega$ , $I_Q = 100\mu A$  |       | 76        | 91   |       | 70        | 91   |       | 70        | 91   |                  |
|                                     |                          | $R_S \leq 100k\Omega$ , $I_Q = 1mA^2$   |       | 66        | 87   |       | 60        | 87   |       | 60        | 87   |                  |
| Power Supply Rejection Ratio        | PSRR                     | $R_S \leq 100k\Omega$ , $I_Q = 10\mu A^1$   |       | 80        | 94   |       | 80        | 94   |       | 80        | 94   | dB               |
|                                     |                          | $R_S \leq 100k\Omega$ , $I_Q = 100\mu A$  |       | 80        | 86   |       | 80        | 86   |       | 80        | 86   |                  |
|                                     |                          | $R_S \leq 100k\Omega$ , $I_Q = 1mA^2$   |       | 70        | 77   |       | 70        | 77   |       | 70        | 77   |                  |

Note 1: Does not apply to 7641.  
 Note 2: Does not apply to 7642.  
 Note 3: ICL7631/32 only.  
 Note 4: Does not apply to 7632.



# Single/Dual/Triple/Quad Operational Amplifiers

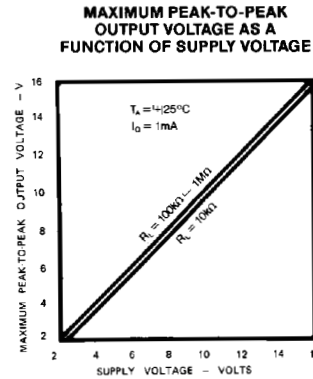
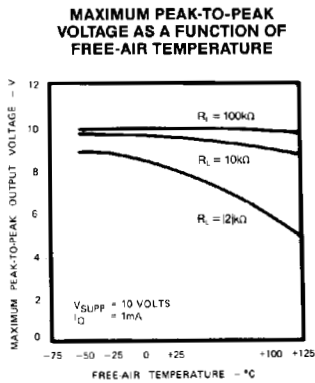
ICL761X/2X/3X/4X

**ELECTRICAL CHARACTERISTICS** – Triple & Quad (Continued)  
( $V_{SUPP} = \pm 5.0V$ ,  $T_A = 25^\circ C$ , unless noted)

| PARAMETER                         | SYMBOL          | CONDITIONS   | 76XXB                |                      | 76XXC                |                      | 76XXE                |                      | UNITS          |
|-----------------------------------|-----------------|--|----------------------|----------------------|----------------------|----------------------|----------------------|----------------------|----------------|
|                                   |                 |  | MIN.                 | TYP. MAX.            | MIN.                 | TYP. MAX.            | MIN.                 | TYP. MAX.            |                |
| Input Referred Noise Voltage      | $e_n$           | $R_S = 100\Omega$ , $f = 1kHz$   | 100                  |                      | 100                  |                      | 100                  |                      | $nV/\sqrt{Hz}$ |
| Input Referred Noise Current      | $i_n$           | $R_S = 100\Omega$ , $f = 1kHz$   | 0.01                 |                      | 0.01                 |                      | 0.01                 |                      | $pA/\sqrt{Hz}$ |
| Supply Current<br>(Per Amplifier) | $I_{SUPP}$      | No Signal, No Load<br>$I_Q = 10\mu A^1$<br>$I_Q = 100\mu A$<br>$I_Q = 1mA^2$   | 0.01<br>0.1<br>1.0   | 0.022<br>0.25<br>2.5 | 0.01<br>0.1<br>1.0   | 0.022<br>0.25<br>2.5 | 0.01<br>0.1<br>1.0   | 0.022<br>0.25<br>2.5 | mA             |
| Channel Separation                | $V_{O1}/V_{O2}$ | $A_{VOL} = 100$  | 120                  |                      | 120                  |                      | 120                  |                      | dB             |
| Slew Rate <sup>4</sup>            | SR              | $A_{VOL} = 1$ , $C_L = 100pF$<br>$V_{IN} = 8V_{P-P}$<br>$I_Q = 10\mu A^1$ , $R_L = 1M\Omega$<br>$I_Q = 100\mu A$ , $R_L = 100k\Omega$<br>$I_Q = 1mA^2$ , $R_L = 10k\Omega^2$ | 0.016<br>0.16<br>1.6 |                      | 0.016<br>0.16<br>1.6 |                      | 0.016<br>0.16<br>1.6 |                      | $V/\mu s$      |
| Rise Time <sup>4</sup>            | $t_r$           | $V_{IN} = 50mV$ , $C_L = 100pF$<br>$I_Q = 10\mu A^1$ , $R_L = 1M\Omega$<br>$I_Q = 100\mu A$ , $R_L = 100k\Omega$<br>$I_Q = 1mA^2$ , $R_L = 10k\Omega$                        | 20<br>2<br>0.9       |                      | 20<br>2<br>0.9       |                      | 20<br>2<br>0.9       |                      | $\mu s$        |
| Overshoot Factor <sup>4</sup>     |                 | $V_{IN} = 50mV$ , $C_L = 100pF$<br>$I_Q = 10\mu A^1$ , $R_L = 1M\Omega$<br>$I_Q = 100\mu A$ , $R_L = 100k\Omega$<br>$I_Q = 1mA^2$ , $R_L = 10k\Omega$                        | 5<br>10<br>40        |                      | 5<br>10<br>40        |                      | 5<br>10<br>40        |                      | %              |

Note 1: Does not apply to 7641.  
Note 2: Does not apply to 7642.  
Note 3: ICL7631/32 only.  
Note 4: Does not apply to 7632.

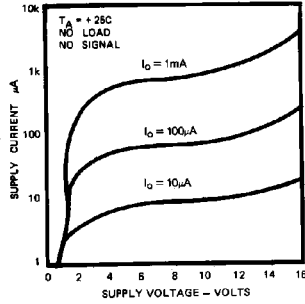
## Typical Operating Characteristics



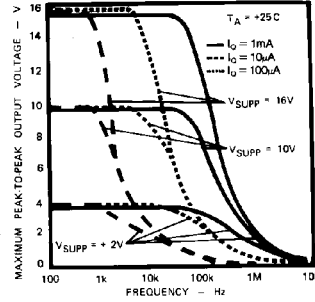
# Single/Dual/Triple/Quad Operational Amplifiers

## Typical Operating Characteristics

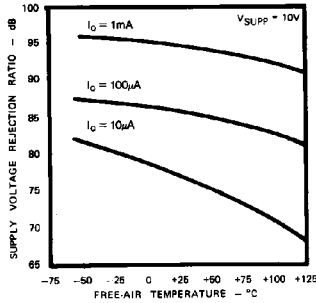
**SUPPLY CURRENT PER AMPLIFIER  
AS A FUNCTION OF SUPPLY VOLTAGE**



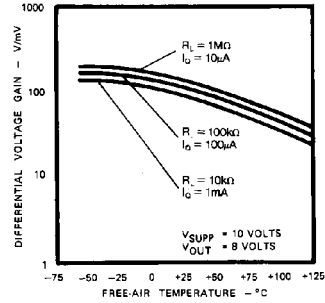
**PEAK-TO-PEAK OUTPUT VOLTAGE  
AS A FUNCTION OF FREQUENCY**



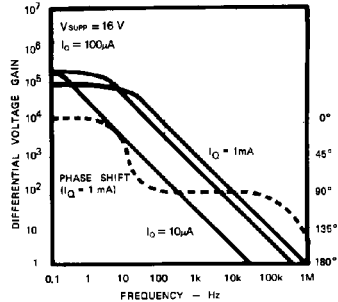
**POWER SUPPLY REJECTION  
RATIO AS A FUNCTION OF  
FREE-AIR TEMPERATURE**



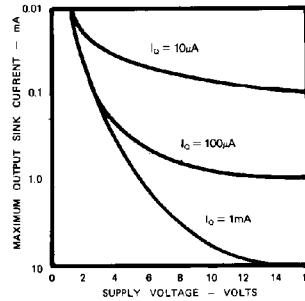
**LARGE SIGNAL DIFFERENTIAL  
VOLTAGE GAIN AS A FUNCTION  
OF FREE-AIR TEMPERATURE**



**LARGE SIGNAL DIFFERENTIAL  
VOLTAGE GAIN AND PHASE SHIFT  
AS A FUNCTION OF FREQUENCY**



**MAXIMUM OUTPUT  
SINK CURRENT AS A  
FUNCTION OF SUPPLY VOLTAGE**

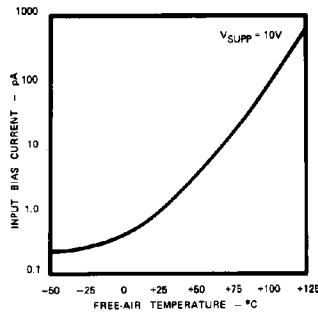


# Single/Dual/Triple/Quad Operational Amplifiers

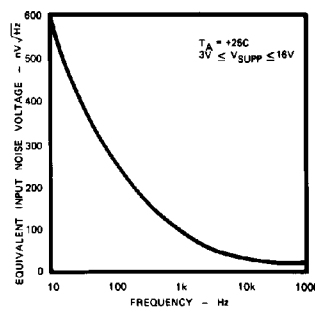
## Typical Operating Characteristics

ICL761X/2X/3X/4X

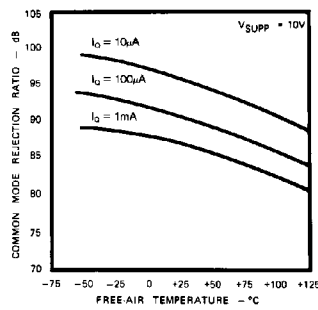
**INPUT BIAS CURRENT AS A FUNCTION OF TEMPERATURE**



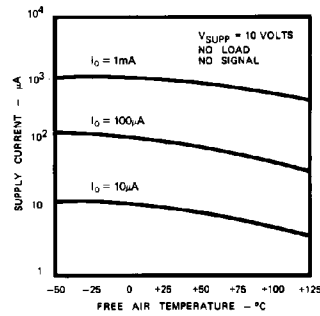
**EQUIVALENT INPUT NOISE VOLTAGE AS A FUNCTION OF FREQUENCY**



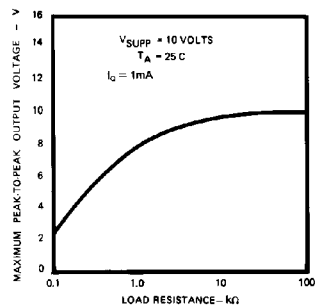
**COMMON MODE REJECTION RATIO AS A FUNCTION OF FREE-AIR TEMPERATURE**



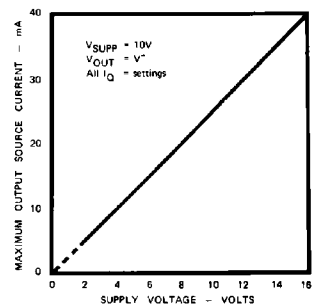
**SUPPLY CURRENT PER AMPLIFIER AS A FUNCTION OF FREE-AIR TEMPERATURE**



**MAXIMUM PEAK-TO-PEAK OUTPUT VOLTAGE AS A FUNCTION OF LOAD RESISTANCE**



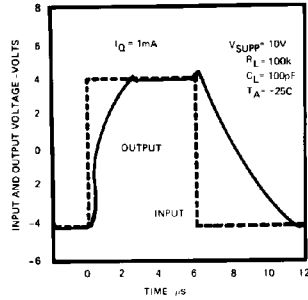
**MAXIMUM OUTPUT/SOURCE CURRENT AS A FUNCTION OF SUPPLY VOLTAGE**



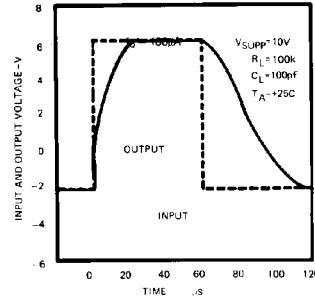
# Single/Dual/Triple/Quad Operational Amplifiers

## Typical Operating Characteristics

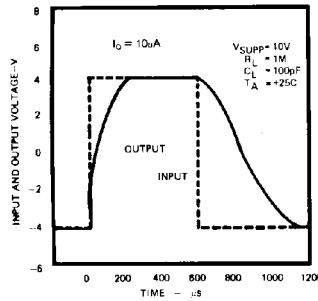
VOLTAGE FOLLOWER LARGE SIGNAL PULSE RESPONSE



VOLTAGE FOLLOWER LARGE SIGNAL PULSE RESPONSE



VOLTAGE FOLLOWER LARGE SIGNAL PULSE RESPONSE



## Detailed Description

### Quiescent Current Selection

The voltage input to the  $I_Q$  pin of the single and triple amplifiers selects a quiescent current ( $I_Q$ ) of 10, 100 or 1000  $\mu\text{A}$ . The dual and quad amplifiers have fixed quiescent current ( $I_Q$ ) settings. Unity gain bandwidth and slew rate increase with increasing quiescent current, as does output sink current capability. The output source current capability is independent of quiescent current.

The lowest  $I_Q$  setting that results in sufficient bandwidth and slew rate should be selected for each specific application.

The  $I_Q$  pin of the single and triple amplifiers controls the quiescent current as follows:

- $I_Q = 10 \mu\text{A}$  . . . . .  $I_Q$  pin to  $V^+$
- $I_Q = 100 \mu\text{A}$  . . . . .  $I_Q$  pin between  $V^- + 0.8\text{V}$  and  $V^+ - 0.8\text{V}$
- $I_Q = 1 \text{mA}$  . . . . .  $I_Q$  pin to  $V^-$

### Input Offset Nulling

The input offset can be nulled by connecting a 25K pot between the OFFSET terminals with the wiper connected to  $V^+$ . At quiescent currents of 1 mA and 100  $\mu\text{A}$ , the nulling range provided is adequate for all  $V_{OS}$  selections. However with higher values of  $V_{OS}$ , and an  $I_Q$  of 10  $\mu\text{A}$ , nulling may not be possible.

### Frequency Compensation

All of the ICL7611 and ICL7621 Series except the ICL7614 are internally compensated for unity gain operation. The ICL7614 is externally compensated by a capacitor connected between COMP and OUT pins, with 39 pF being sufficient compensation for a unity gain buffer. For gains greater than unity, the compensation capacitor value may be reduced to increase the bandwidth and slew rate. The ICL7132 is not compensated and does not have frequency compensation pins. Use only at gains  $\geq 20$  at  $I_Q$  of 1mA; at gains  $\geq 10$  at  $I_Q$  of 100 $\mu\text{A}$ ; at gains  $\geq 5$  at  $I_Q$  of 10 $\mu\text{A}$ .

# Single/Dual/Triple/Quad Operational Amplifiers

## Output Loading Considerations

Approximately 70% of the amplifier's quiescent current flows in the output stage. The output swing can approach the supply rails for output loads of 1M, 100k and 10k, using the output stage in a highly linear class A mode. Crossover distortion is avoided and the voltage gain is maximized in this mode. The output stage, however, can also be operated in Class AB, which supplies higher output currents. (See graphs under Typical Operating Characteristics). The voltage gain decreases and the output transfer characteristic is non-linear during the transition from Class A to Class B operation.

The output stage, with a gain that is directly proportional to load impedance, approximates a transconductance amplifier. Approximately the same open loop gains are obtained at each of the  $I_Q$  settings if corresponding loads of 10k, 100k, and 1M are used.

The maximum output source current is higher than the maximum sink current, and is independent of  $I_Q$ .

Like most amplifiers, there are output loads for which the amplifier stability is not guaranteed. In particular, avoid capacitive loads greater than 100 pF; and while on the 1mA  $I_Q$  setting, avoid loads less than 5 k $\Omega$ . Since the output stage is a transconductance output, very large (>10  $\mu$ F) capacitive loads will create a dominant pole and the output will be stable, even with loads that are less than 5 k $\Omega$ .

## Extended Common Mode Voltage Range, ICL7612 and ICL7616

A common mode voltage range that includes both  $V^+$  and  $V^-$  is often desirable, especially in single supply operation. The ICL7612 and ICL7616 extended common mode range op amps are designed specifically to meet this need. The ICL7612 input common mode voltage range (CMVR) extends beyond both power supply rails when operated with at least 3V total supply and an  $I_Q$  of 10 $\mu$ A or 100 $\mu$ A. The ICL7616 CMVR includes the negative supply voltage (or ground when operated with a single supply) at an  $I_Q$  of 10 $\mu$ A or 100 $\mu$ A.

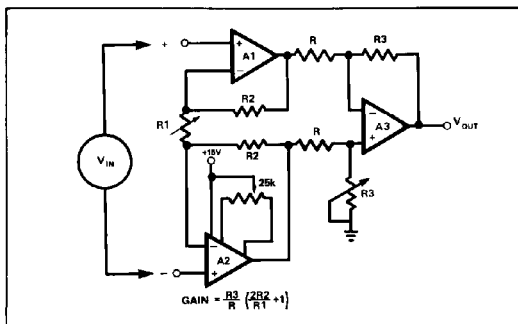


Figure 1. Instrumentation Amplifier—Adjust R3 to improve CMRR. The offset of all three amplifiers is nulled by the offset adjustment of A2.

## Printed Circuit Board Layout

Careful PCB layout techniques must be used to take full advantage of the very low bias current of the ICL7611 family. The inputs should be encircled with a low impedance trace, or guard, that is at the same potential as the inputs. In an inverting amplifier this is normally ground; in a unity gain buffer connect the guard to the output. A convenient way of guarding the 8 pin TO-99 version of the ICL7611 is to use a 10 pin circle, with the two extra pads on either side of the input pins to provide space for a guard ring (see Figure 8). Assembled boards should be carefully cleaned, and if a high humidity environment is expected, conformally coated.

## Single Supply Operation

The ICL7611 family will operate from a single 2V to 16V power supply. The common mode voltage range of the standard amplifier types when operated from a single supply is 1.0V to ( $V^+ - 0.6V$ ) at 10  $\mu$ A  $I_Q$ . At 100  $\mu$ A  $I_Q$  the CMVR is 1.0V to ( $V^+ - 0.8V$ ), and at 1mA  $I_Q$  the CMVR is 1.3V to ( $V^+ - 1.3V$ ). If this CMVR range is insufficient, use the ICL7612, whose CMVR includes both ground and  $V^+$  or the ICL7616, whose CMVR includes ground.

A convenient way to generate a psuedo-ground at  $V^+/2$  is to use one op amp of a quad to buffer a  $V^+/2$  voltage from a high impedance resistive divider.

## Low Voltage Operation

Operation at  $V_{SUPP} = \pm 1.0V$  is only guaranteed at  $I_Q = 10 \mu A$ . Output swings to within a few millivolts of the supply rails are achievable for  $R_L (> \text{or} =) 1 M\Omega$ . Guaranteed input CMVR is  $\pm 0.6V$  minimum and typically  $+0.9V$  to  $-0.7V$  at  $V_{SUPP} = \pm 1.0V$ . For applications where greater common mode range is desirable, refer to description of ICL7612 and ICL7616 above.

## Applications

Note that in no case is  $I_Q$  shown. The value of  $I_Q$  must be chosen by the designer with regard to frequency response and power dissipation.

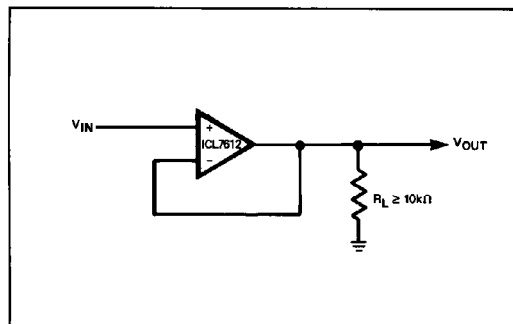


Figure 2. Simple Follower—By using the ICL7612 in these applications, the circuits will follow rail to rail inputs.

# Single/Dual/Triple/Quad Operational Amplifiers

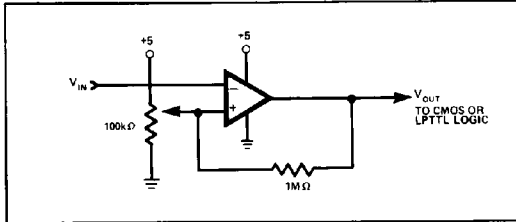


Figure 3. Level Detector—By using the ICL7612 in these applications, the circuits will follow rail to rail inputs.

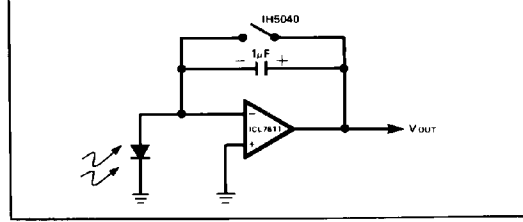


Figure 4. Photocurrent Integrator—Low leakage currents allow integration times up to several hours.

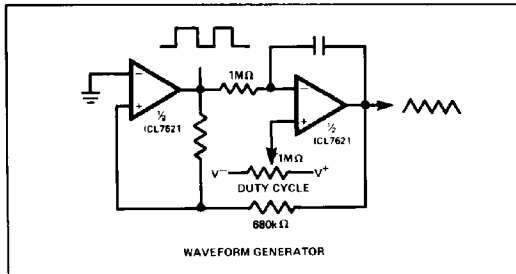


Figure 5. Precise Triangle/Square Wave Generator—The frequency and duty cycle are virtually independent of power supply.

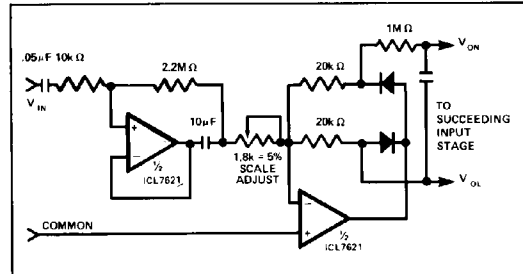


Figure 6. Averaging AC to DC Converter—Recommended for Maxim's ICL7106/07/09 A/D Converters.

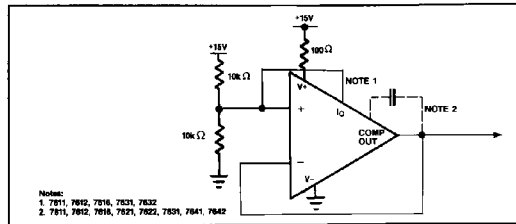


Figure 7. Burn-In and Life Test Circuit

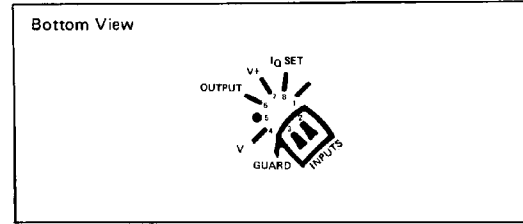


Figure 8. Input Guard for TO-99

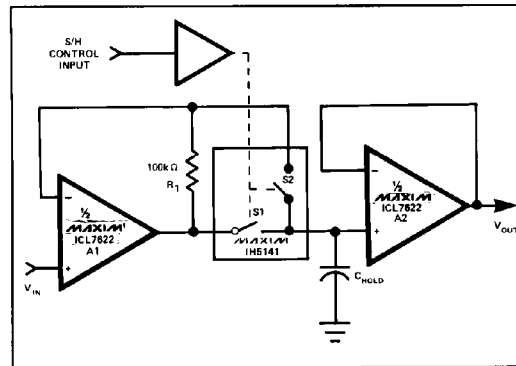


Figure 9. Low Droop Rate Sample & Hold—S2 improves accuracy and acquisition time by including the voltage drop across S1 inside the feedback loop. R1 closes the feedback loop of A1 during the hold phase. The droop rate is  $(V_{BIAS(A2)} + I_{LEAK(S1)} + I_{LEAK(S2)})/C_{HOLD}$ .

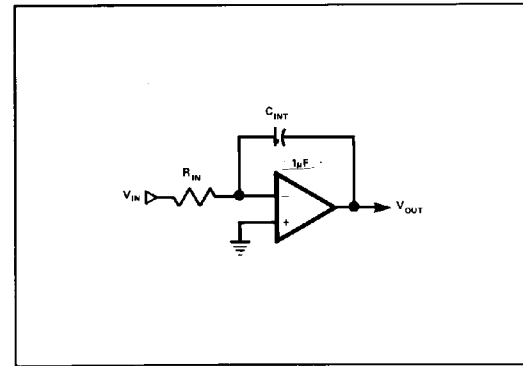


Figure 10. Long Time Constant Integrator—With  $R_{IN} = 10^9$  ohm, the time constant of this integrator is 100,000 seconds. Since the input voltage is converted to a current by  $R_{IN}$ , the input voltage can far exceed the power supply voltage.

# Single/Dual/Triple/Quad Operational Amplifiers

ICL761X/2X/3X/4X

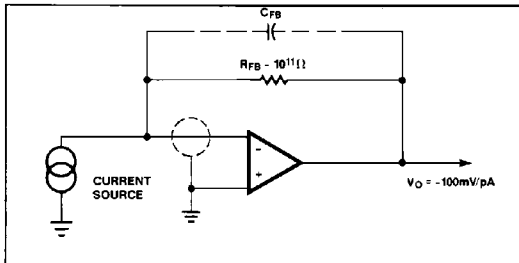


Figure 11. Pico Ammeter—The response time of this circuit is  $R_{FB} \times C_{FB}$ , where  $C_{FB}$  is the stray capacitance between the output and the inverting terminal of the amplifier.

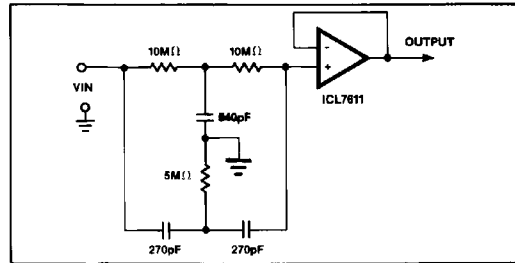


Figure 12. 60 Hz Twin "T" Notch Filter—The low, 1 pA bias current of the ICL7611 allows use of small 540 pF and 270 pF capacitors, even with a notch frequency of 60 Hz. The 60 Hz rejection is approximately 40 dB.

## Chip Topographies

